

KCWV Series SMD Power Inductor

Feature

High frequency design with excellent Q values.
Excellent thermal stability.

Applications

Modems、 mobile phones、 cordless telephones、 global positioning systems
Xdsl filter、 wireless communications equipment、 networking systems、
Computer products and peripherals.

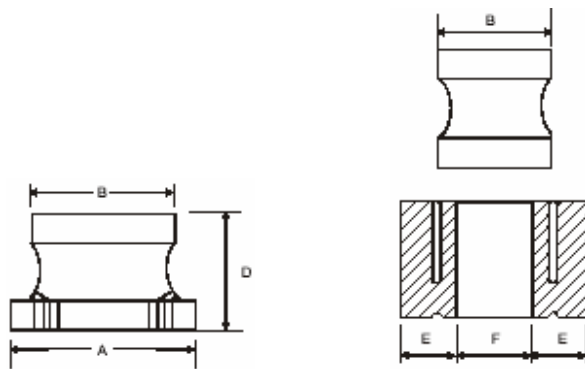
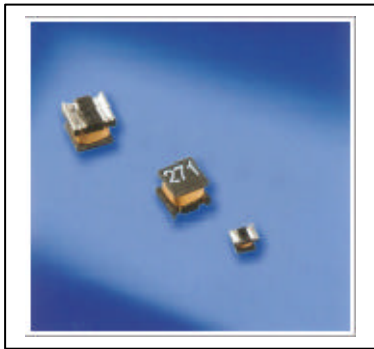
Available type

3216

3225

4532

5750



Shape and dimensions

Dimensions: mm

TYPE	A	B	C	D	E(Min)	F(Min)
KCWV3216	3.2± 0.3	1.6±0.2	2.3±0.2	1.8± 0.2	0.7	0.7
KCWV3225	3.2± 0.3	2.5±0.2	2.5± 0.2	2.0±0.4	0.9	1.3
KCWV4532	4.5± 0.3	3.2± 0.2	3.6± 0.2	2.6±0.4	1.2	1.6
KCWV5750	5.7± 0.3	5.0±0.3	5.0±0.3	4.7±0.5	1.3	1.7

Identification

KCWV	3216	220	K	T
1	2	3	4	5

1. Series name
2. Type
3. Inductance (100: 10uH)
4. Tolerance (J : 5% ; K : 10% ; M : 20%)
5. Package (T : Taping B : Bulk)

KCWV3216 TYPE

P/N	INDUCTANCE (μ H)	DCR(O) (max)	IDC(mA) (max)	Q (min)	SRF(MHz) (min)	TEST FREQ	
						L	Q
KCWV3216-R15KT	0.15	0.546	250	20	250	1MHz	2.52MHz
KCWV3216-R22KT	0.22	0.602	240	20	250	1MHz	2.52MHz
KCWV3216-R33KT	0.33	0.63	230	30	250	1MHz	2.52MHz
KCWV3216-R47KT	0.47	1.162	215	30	200	1MHz	2.52MHz
KCWV3216-R56KT	0.56	0.854	200	30	180	1MHz	2.52MHz
KCWV3216-R68KT	0.68	0.938	190	30	160	1MHz	2.52MHz
KCWV3216-R82KT	0.82	1.022	185	30	120	1MHz	2.52MHz
KCWV3216-1R0KT	1	0.637	175	35	100	1MHz	1MHz
KCWV3216-1R2KT	1.2	1.17	165	35	90	1MHz	1MHz
KCWV3216-1R5KT	1.5	1.3	155	35	75	1MHz	1MHz
KCWV3216-1R8KT	1.8	2.08	150	35	60	1MHz	1MHz
KCWV3216-2R2KT	2.2	0.91	140	35	50	1MHz	1MHz
KCWV3216-2R7KT	2.7	0.715	135	35	43	1MHz	1MHz
KCWV3216-3R3KT	3.3	1.82	130	35	38	1MHz	1MHz
KCWV3216-3R9KT	3.9	1.95	125	35	35	1MHz	1MHz
KCWV3216-4R7KT	4.7	2.21	120	35	31	1MHz	1MHz
KCWV3216-5R6KT	5.6	2.34	115	35	28	1MHz	1MHz
KCWV3216-6R8KT	6.8	2.6	110	35	25	1MHz	1MHz
KCWV3216-8R2KT	8.2	2.86	105	35	23	1MHz	1MHz
KCWV3216-100KT	10	3.25	100	35	20	1MHz	1MHz
KCWV3216-120KT	12	3.51	95	35	18	1MHz	1MHz
KCWV3216-150KT	15	3.9	90	35	16	1MHz	1MHz
KCWV3216-180KT	18	4.42	85	35	15	1MHz	1MHz
KCWV3216-220KT	22	4.03	85	40	14	1MHz	1MHz
KCWV3216-270KT	27	4.42	85	40	13	1MHz	1MHz
KCWV3216-330KT	33	4.94	80	40	12	1MHz	1MHz
KCWV3216-390KT	39	9.36	55	40	11	1MHz	1MHz
KCWV3216-470KT	47	10.4	55	40	10	1MHz	1MHz
KCWV3216-560KT	56	11.57	50	40	9	1MHz	1MHz
KCWV3216-680KT	68	12.87	50	40	8.5	1MHz	1MHz
KCWV3216-820KT	82	14.3	45	40	7.5	1MHz	1MHz
KCWV3216-101KT	100	15.6	45	40	7	1MHz	0.796MHz

KCWV3225 TYPE

P/N	Inductance (μ H)	DCR(O) (max)	IDC(mA) (max)	Q (min)	SRF(MHz) (min)	TEST FREQ	
						L	Q
KCWV3225-R15KT	0.1	0.25	700	10	200	1MHz	2.52MHz
KCWV3225-R18KT	0.18	0.25	650	10	200	1MHz	2.52MHz
KCWV3225-R27KT	0.27	0.25	600	10	200	1MHz	2.52MHz
KCWV3225-R39KT	0.39	0.25	530	10	200	1MHz	2.52MHz
KCWV3225-R56KT	0.56	0.25	530	10	160	1MHz	2.52MHz
KCWV3225-R68KT	0.68	0.25	470	10	160	1MHz	2.52MHz
KCWV3225-R82KT	0.82	0.25	450	10	120	1MHz	2.52MHz
KCWV3225-1R0KT	1	0.5	445	10	100	1MHz	1MHz
KCWV3225-1R2KT	1.2	0.6	425	10	100	1MHz	1MHz
KCWV3225-1R5KT	1.5	0.6	400	10	75	1MHz	1MHz
KCWV3225-1R8KT	1.8	0.7	390	10	60	1MHz	1MHz
KCWV3225-2R2KT	2.2	0.8	370	10	50	1MHz	1MHz
KCWV3225-2R7KT	2.7	0.9	320	10	43	1MHz	1MHz
KCWV3225-3R3KT	3.3	1	300	10	38	1MHz	1MHz
KCWV3225-3R9KT	3.9	1.1	290	10	35	1MHz	1MHz
KCWV3225-4R7KT	4.7	1.2	270	20	31	1MHz	1MHz
KCWV3225-5R6KT	5.6	1.3	250	20	28	1MHz	1MHz
KCWV3225-6R8KT	6.8	1.5	240	20	25	1MHz	1MHz
KCWV3225-8R2KT	8.2	1.6	225	20	23	1MHz	1MHz
KCWV3225-100KT	10	1.8	190	25	20	1MHz	1MHz
KCWV3225-120KT	12	2	180	25	18	1MHz	1MHz
KCWV3225-150KT	15	2.2	170	25	16	1MHz	1MHz
KCWV3225-180KT	18	2.5	165	25	15	1MHz	1MHz
KCWV3225-220KT	22	2.8	150	25	14	1MHz	1MHz
KCWV3225-270KT	27	3.1	125	25	13	1MHz	1MHz
KCWV3225-330KT	33	3.5	115	25	12	1MHz	1MHz
KCWV3225-390KT	39	3.9	110	25	11	1MHz	1MHz
KCWV3225-470KT	47	4.3	100	25	11	1MHz	1MHz
KCWV3225-560KT	56	4.9	85	25	10	1MHz	1MHz
KCWV3225-680KT	68	5.5	80	25	9	1MHz	1MHz
KCWV3225-820KT	82	6.2	70	25	8.5	1MHz	1MHz
KCWV3225-101KT	100	7	80	30	8	1MHz	0.796MHz
KCWV3225-121KT	120	8	75	30	7.5	1MHz	0.796MHz
KCWV3225-151KT	150	9.3	70	30	7	1MHz	0.796MHz
KCWV3225-181KT	180	10.2	65	30	6	1MHz	0.796MHz
KCWV3225-221KT	220	11.8	65	30	5.5	1MHz	0.796MHz
KCWV3225-271KT	270	12.5	65	30	5	1MHz	0.796MHz
KCWV3225-331KT	330	13	65	30	5	1MHz	0.796MHz
KCWV3225-391KT	390	22	50	30	5	1MHz	0.796MHz
KCWV3225-471KT	470	25	45	30	5	1MHz	0.796MHz
KCWV3225-561KT	560	28	40	30	5	1MHz	0.796MHz

KCWV4532 TYPE

P/N	Inductance (μ H)	DCR(O) (max)	IDC(mA) (max)	Q (min)	SRF(MHz) (min)	TEST FREQ	
						L	Q
KCWV4532-1R0KT	1	0.2	500	20	120	1MHz	1MHz
KCWV4532-1R2KT	1.2	0.2	500	20	100	1MHz	1MHz
KCWV4532-1R5KT	1.5	0.3	500	20	85	1MHz	1MHz
KCWV4532-1R8KT	1.8	0.3	500	20	75	1MHz	1MHz
KCWV4532-2R2KT	2.2	0.3	500	20	62	1MHz	1MHz
KCWV4532-2R7KT	2.7	0.32	500	20	53	1MHz	1MHz
KCWV4532-3R3KT	3.3	0.35	500	20	47	1MHz	1MHz
KCWV4532-3R9KT	3.9	0.38	500	20	41	1MHz	1MHz
KCWV4532-4R7KT	4.7	0.4	500	30	38	1MHz	1MHz
KCWV4532-5R6KT	5.6	0.47	500	30	33	1MHz	1MHz
KCWV4532-6R8KT	6.8	0.5	450	30	31	1MHz	1MHz
KCWV4532-8R2KT	8.2	0.56	450	30	27	1MHz	1MHz
KCWV4532-100KT	10	0.56	400	35	23	1MHz	1MHz
KCWV4532-120KT	12	0.62	380	35	21	1MHz	1MHz
KCWV4532-150KT	15	0.73	360	35	19	1MHz	1MHz
KCWV4532-180KT	18	0.82	340	35	17	1MHz	1MHz
KCWV4532-220KT	22	0.94	320	35	15	1MHz	1MHz
KCWV4532-270KT	27	1.1	300	35	14	1MHz	1MHz
KCWV4532-330KT	33	1.2	270	35	12	1MHz	1MHz
KCWV4532-390KT	39	1.4	240	35	11	1MHz	1MHz
KCWV4532-470KT	47	1.5	220	35	10	1MHz	1MHz
KCWV4532-560KT	56	1.7	200	35	9.3	1MHz	1MHz
KCWV4532-680KT	68	1.9	180	35	8.4	1MHz	1MHz
KCWV4532-820KT	82	2.2	170	35	7.5	1MHz	1MHz
KCWV4532-101KT	100	2.5	160	40	6.8	1MHz	0.796MHz
KCWV4532-121KT	120	3	150	40	6.2	1MHz	0.796MHz
KCWV4532-151KT	150	3.7	130	40	5.5	1MHz	0.796MHz
KCWV4532-181KT	180	4.5	120	40	5	1MHz	0.796MHz
KCWV4532-221KT	220	5.4	110	40	4.5	1MHz	0.796MHz
KCWV4532-271KT	270	6.8	100	40	4	1MHz	0.796MHz
KCWV4532-331KT	330	8.2	95	40	3.6	1MHz	0.796MHz
KCWV4532-391KT	390	9.7	90	40	3.3	1MHz	0.796MHz
KCWV4532-471KT	470	11.8	80	40	3	1MHz	0.796MHz
KCWV4532-561KT	560	14.5	70	40	2.7	1MHz	0.796MHz
KCWV4532-681KT	680	17	65	40	2.5	1MHz	0.796MHz
KCWV4532-821KT	820	20.5	60	40	2.2	1MHz	0.796MHz
KCWV4532-102KT	1000	25	50	40	2	1MHz	0.796MHz
KCWV4532-122KT	1200	30	45	40	1.8	1MHz	0.796MHz
KCWV4532-152KT	1500	37	40	40	1.6	1MHz	0.796MHz
KCWV4532-182KT	1800	45	35	40	1.5	1MHz	0.796MHz
KCWV4532-222KT	2200	50	30	40	1.3	1MHz	0.796MHz

KCWV5750 TYPE

P/N	INDUCTANCE (uH)	DCR(O) (max)	IDC(mA) (max)	SRF(MHz) (min)	TEST FREQ
KCWV5750-R12MT	0.12	0.01	6	450	1MHz
KCWV5750-R27MT	0.27	0.014	5.3	300	1MHz
KCWV5750-R47MT	0.47	0.018	4.8	200	1MHz
KCWV5750-1R0MT	1	0.027	4	150	1MHz
KCWV5750-1R5MT	1.5	0.031	3.7	110	1MHz
KCWV5750-2R2MT	2.2	0.041	3.2	80	1MHz
KCWV5750-3R3MT	3.3	0.05	2.9	40	1MHz
KCWV5750-4R7MT	4.7	0.057	2.7	30	1MHz
KCWV5750-6R8MT	6.8	0.1	2	25	1MHz
KCWV5750-100MT	10	0.13	1.7	20	1MHz
KCWV5750-150MT	15	0.21	1.4	17	1MHz
KCWV5750-220MT	22	0.27	1.2	15	1MHz
KCWV5750-330MT	33	0.45	0.9	12	1MHz
KCWV5750-470MT	47	0.56	0.8	10	1MHz
KCWV5750-680MT	68	0.94	0.64	7.6	1MHz
KCWV5750-101MT	100	1.2	0.56	6.5	0.1MHz
KCWV5750-151MT	150	2.66	0.42	5	0.1MHz
KCWV5750-221MT	220	3.36	0.32	4	0.1MHz
KCWV5750-331MT	330	6.16	0.27	3.1	0.1MHz
KCWV5750-471MT	470	7.56	0.24	2.4	0.1MHz
KCWV5750-681MT	680	11.3	0.19	1.9	0.1MHz
KCWV5750-102MT	1000	14.4	0.15	1.7	0.1MHz
KCWV5750-152MT	1500	30.1	0.1	1.2	0.1MHz
KCWV5750-222MT	2200	45	0.09	1.1	0.1MHz
KCWV5750-332MT	3300	50	0.08	1	0.1MHz
KCWV5750-472MT	4700	61	0.07	0.8	0.1MHz
KCWV5750-682MT	6800	100	0.06	0.7	0.1MHz
KCWV5750-822MT	8200	125	0.05	0.6	0.1MHz
KCWV5750-103MT	10000	140	0.05	0.5	0.1MHz